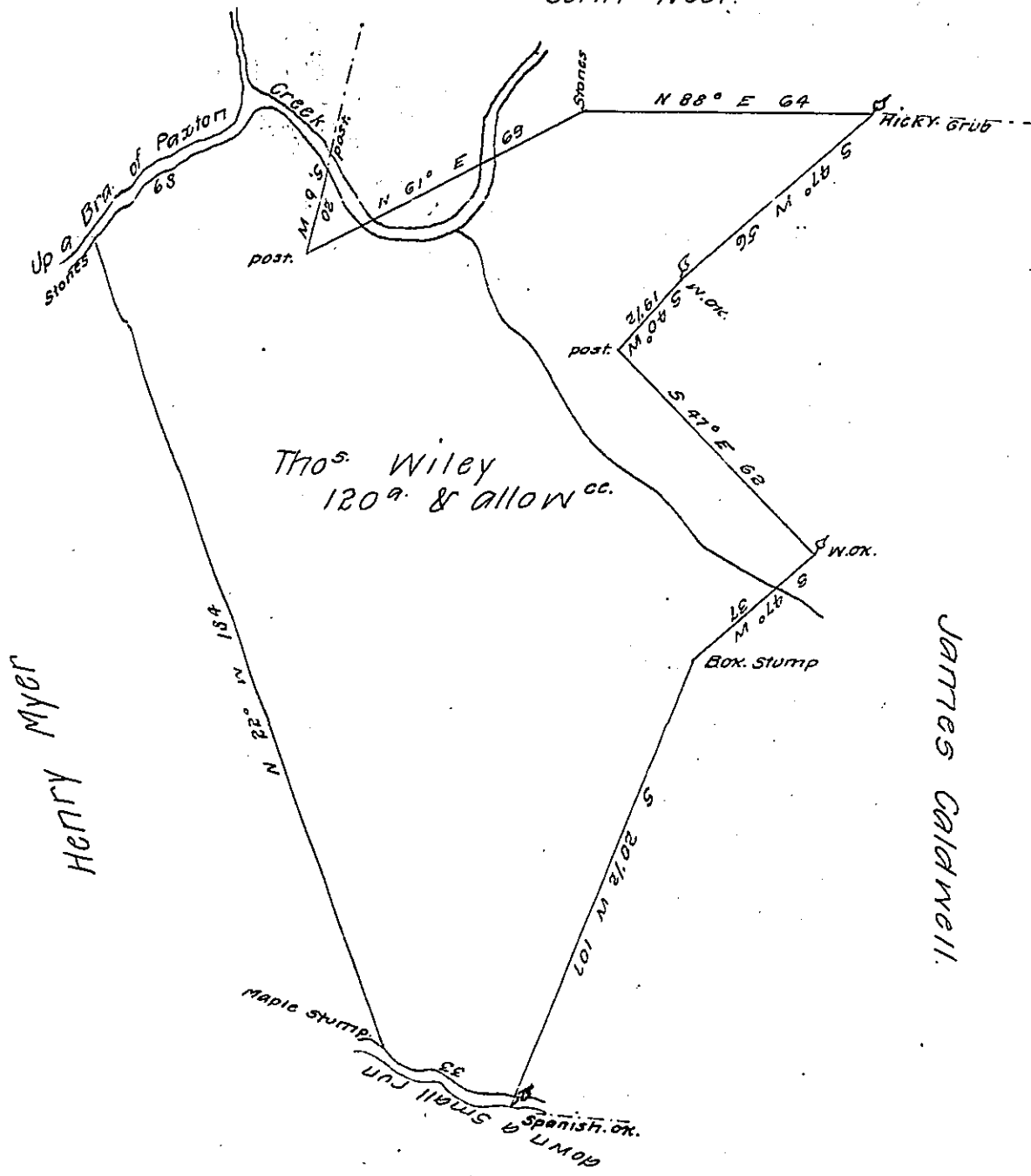


FORM NO. 1.

John Neel.



Surveyd for Thomas Wiley on the 24th day of Decem-
 ber 1790 the above discribed tract of one hundred twenty
 acres & allow^{cc} of six P Ct Situate in Paxton township
 Dauphin County By his Warrant 1st day of September
 1790.

P-Bartrem Galbraith D.S.

To Daniel Bradhead Esq^r
 Surveyor General.

IN TESTIMONY that the above is a copy of the original remaining on file in
 the Department of Internal Affairs of Pennsylvania, made
 conformably to an Act of Assembly approved the 16th day of
 February 1833, I have hereunto set my hand and caused
 the Seal of said Department to be affixed at Harrisburg,
 this eighth day of June 1907.

Henry Howell
 Secretary of Internal Affairs.